

	TREE DRIP LINE
	EVERGREEN TREE
	DECIDUOUS TREE
	TREE TO BE REMOVED
	TREE PROTECTION FENCING MUST BE PLACED PRIOR TO CONSTRUCTION ACTIVITY
	"E" REPRESENTS EXCEPTIONAL TREES. IN EXCESS OF 24" DBH
	6"-8" DEEP MULCH
	AQUATEX NFS-1 CONTROL UNIT
	WD-1 DETECTION UNIT
	IRRIGATION DRIPLINE

TREE PROTECTION AREA (TPZ)

KEEP OUT!

DO NOT REMOVE OR ADJUST THE APPROVED LOCATION OF THIS TREE PROTECTION AREA

Trees enclosed by this fence are protected and are subject to the conditions of the tree permit. Violation of tree conditions may lead to:

1. Correction Notices or Stop Work Orders until compliance is achieved
2. RE Inspection Fees
3. Arborist reports recommending mitigation

- Notes**
1. No pruning shall be performed unless under the direction of an arborist
 2. No equipment shall be stored or operated inside the protective fencing including during fence installation and removal
 3. No storage of materials shall occur inside the protective fencing
 4. Refer to Site/Utility Plan for allowable modifications to the tree protection area.
 5. Unauthorized activities in tree protection area may require evaluation by private arborist to identify impacts and mitigation required
 6. Exposed roots: For roots > 1" damaged during construction, make a clean straight cut to remove damaged portion and inform City Arborist

Cover the top or other side of the foundation area. Use 2x4s to form for fence alignment.



Tree protection fence: 4'-6" chain link fence, solidly anchored into the ground, or if authorized High-density polyethylene fencing with 3.5" x 1.5" openings, color orange. Steel posts installed at 8' o.c.

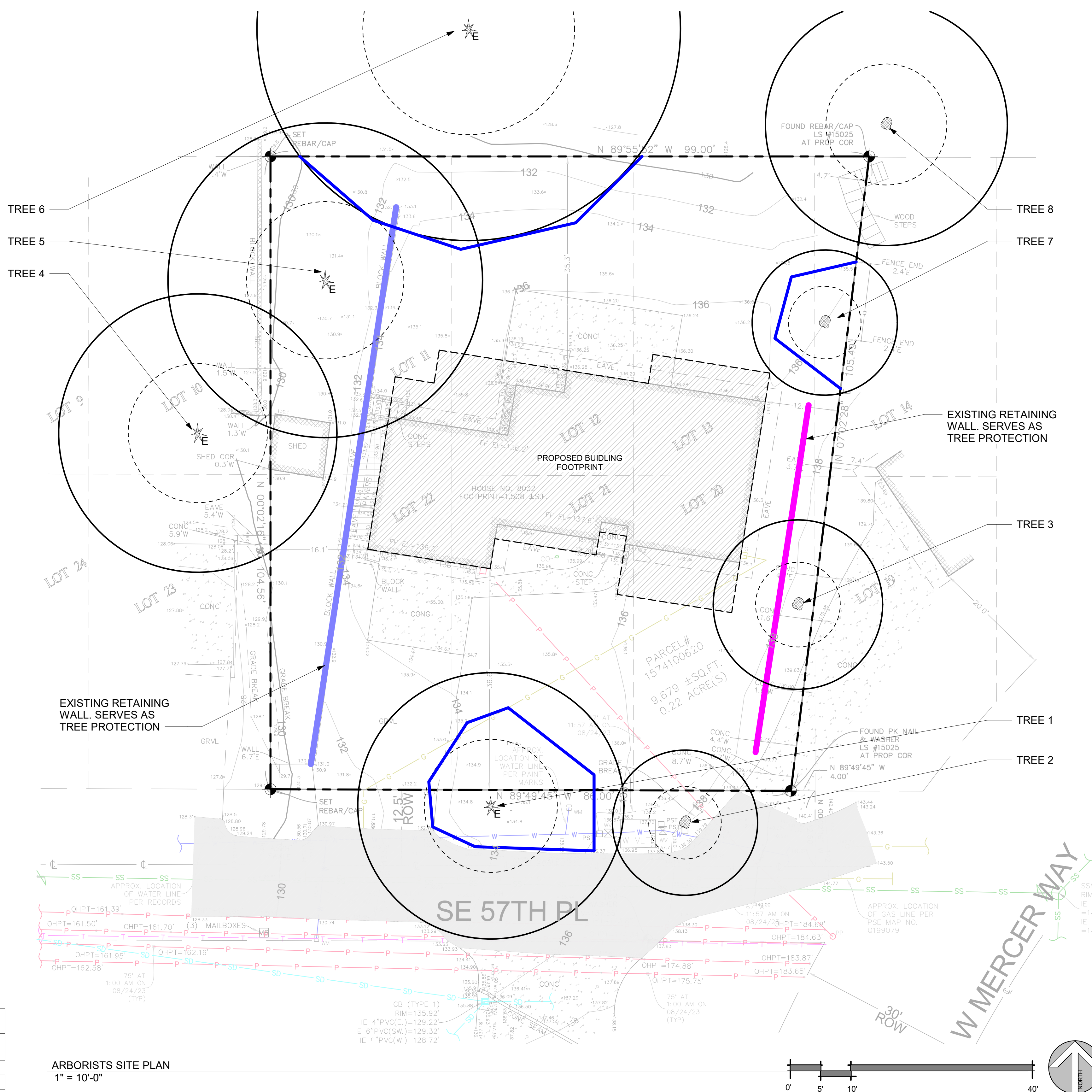
2" x 6" steel posts or approved equal

Maintain existing grade with the tree protection fence unless otherwise indicated on the plans.

Any Work in the protected area must be with the permission of the City Arborist john.kenney@mercerwa.gov

Tree Schedule

ID	Common Name	Scientific Name	# of Trunks	DBH/DSH	Dripline	Condition	Retain	Comments
1	SPRUCE	Picea	1	36.0"	22' - 0"	GOOD	Yes	ROW
2	CHERRY	Prunus	1	6.0"	12' - 0"	GOOD	Yes	ROW
3	COTTONWOOD	Populus deltoides	1	10.0"	14' - 0"	GOOD	Yes	
4	WESTERN RED CEDAR	Thuja plicata	1	38.0"	23' - 0"	GOOD	Yes	
5	DOUGLAS FIR	Pseudotsuga menziesii	1	48.0"	26' - 0"	GOOD	Yes	
6	BIG LEAF MAPLE	Acer macrophyllum	1	32.0"	35' - 0"	POOR	Yes	
7	MAGNOLIA	Magnolia	1	7.0"	12' - 0"	GOOD	Yes	
8	BIG LEAF MAPLE	Acer macrophyllum	1	14.0"	20' - 0"	POOR	Yes	



ARBORISTS SITE PLAN
1" = 10'-0"

PREPARED BY:
NEAL BAKER
ARBORISTS NW.COM
ISA CERT. PN1075A
TRAQ ISA (TREE RISK ASSESSMENT QUALIFIED)
MEMBER AREA & SOCA
PH: 206 779 2579

arboristsNW

Arborists NW is a full spectrum arboricultural, consulting and landscape design and installation provider. When you think tree and landscape services, think Arborists NW.

ONLINE: <https://arboristsnw.com/>
PHONE: 206-779-2579
EMAIL: neal@arboristsnw.com

No.	Description	Date

RUDD PLAN

8032 SE 57TH ST, MERCER ISLAND, WA 98040

RUDD PLAN

ARBORIST TREE PLAN

Project number 24008

Date

Drawn by CW

Checked by NB

X100

Scale As indicated

	TREE DRIP LINE
	EVERGREEN TREE
	DECIDUOUS TREE
	TREE TO BE REMOVED
	TREE PROTECTION FENCING MUST BE PLACED PRIOR TO CONSTRUCTION ACTIVITY
	"E" REPRESENTS EXCEPTIONAL TREES. IN EXCESS OF 24" DBH
	6"-8" DEEP MULCH
	AQUATEX NFS-1 CONTROL UNIT
	WD-1 DETECTION UNIT
	IRRIGATION DRIPLINE

TREE PROTECTION AREA (TPZ)

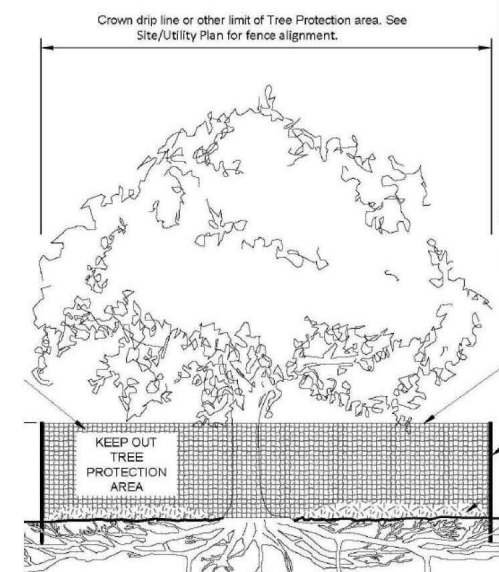
KEEP OUT!

DO NOT REMOVE OR ADJUST THE APPROVED LOCATION OF THIS TREE PROTECTION AREA

Trees enclosed by this fence are protected and are subject to the conditions of the tree permit. Violation of tree conditions may lead to:

1. Correction Notices or Stop Work Orders until compliance is achieved
2. RE Inspection Fees
3. Arborist reports recommending mitigation

- Notes**
1. No pruning shall be performed unless under the direction of an arborist
 2. No equipment shall be stored or operated inside the protective fencing including during fence installation and removal
 3. No storage of materials shall occur inside the protective fencing
 4. Refer to Site/Utility Plan for allowable modifications to the tree protection area.
 5. Unauthorized activities in tree protection area may require evaluation by private arborist to identify impacts and mitigation required
 6. Exposed roots: For roots > 1" damaged during construction, make a clean straight cut to remove damaged portion and inform City Arborist



Tree protection fence: 4'-6" chain link fence, solidly anchored into the ground, or if authorized High-density polyethylene fencing with 3.5" x 1.5" openings; color orange. Steel posts installed at 8' o.c.

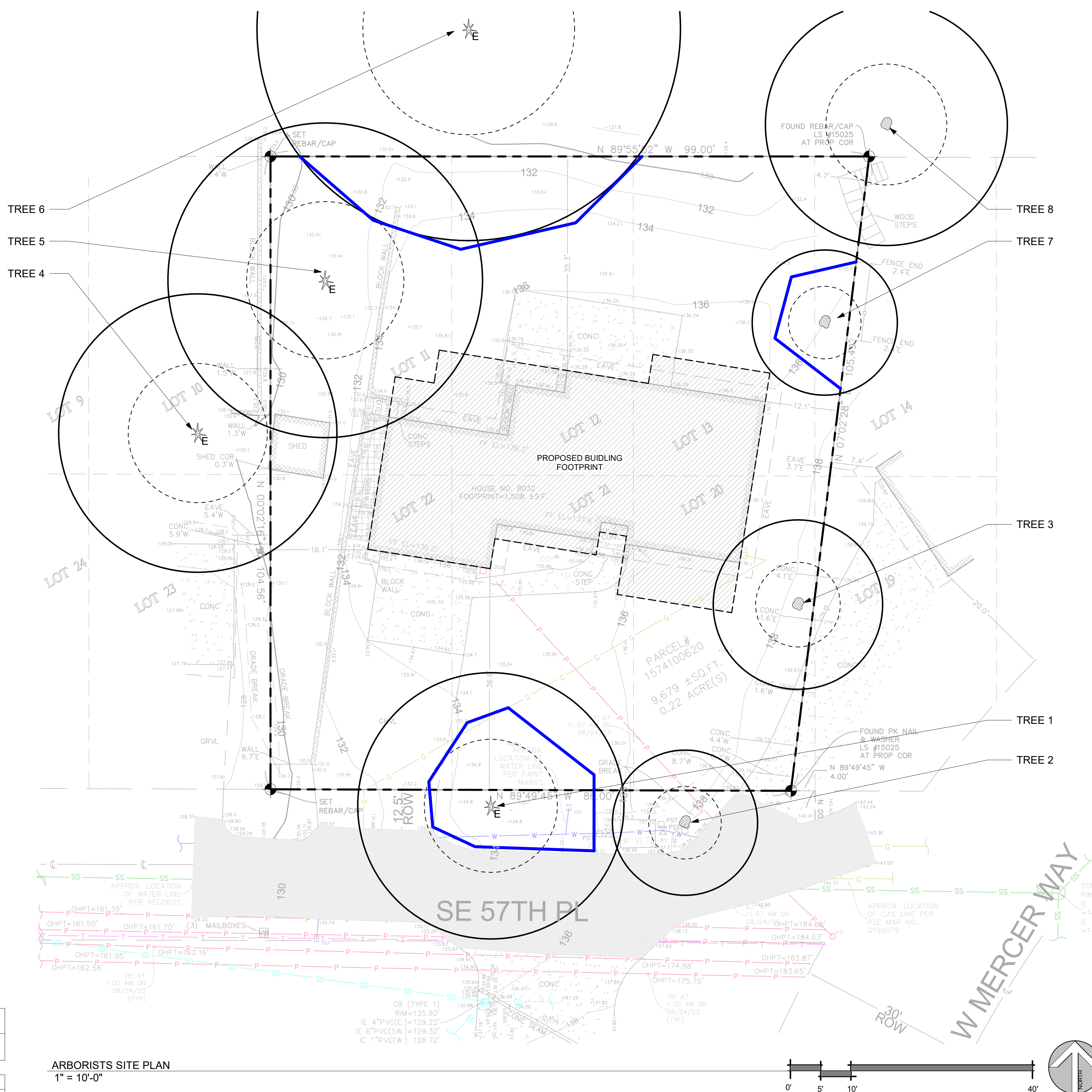
2" x 6" steel posts or approved equal

Maintain existing grade with the tree protection fence unless otherwise indicated on the plans

Any Work in the protected area must be with the permission of the City Arborist john.kenney@mercerwa.gov

Tree Schedule

ID	Common Name	Scientific Name	# of Trunks	DBH/DSH	Dripline	Condition	Retain	Comments
1	SPRUCE	Picea	1	36.0"	22' - 0"	GOOD	Yes	ROW
2	CHERRY	Prunus	1	6.0"	12' - 0"	GOOD	Yes	ROW
3	COTTONWOOD	Populus deltoides	1	10.0"	14' - 0"	GOOD	Yes	
4	WESTERN RED CEDAR	Thuja plicata	1	38.0"	23' - 0"	GOOD	Yes	
5	DOUGLAS FIR	Pseudotsuga menziesii	1	48.0"	26' - 0"	GOOD	Yes	
6	BIG LEAF MAPLE	Acer macrophyllum	1	32.0"	35' - 0"	POOR	Yes	
7	MAGNOLIA	Magnolia	1	7.0"	12' - 0"	GOOD	Yes	
8	BIG LEAF MAPLE	Acer macrophyllum	1	14.0"	20' - 0"	GOOD	Yes	



ARBORISTS SITE PLAN
1" = 10'-0"



PREPARED BY:
NEAL BAKER
ARBORISTS NW.COM
ISA CERT. PN1075A
TRAQ ISA (TREE RISK ASSESSMENT QUALIFIED)
MEMBER AREA & SOCA
PH: 206 779 2579

arboristsNW

Arborists NW is a full spectrum arboricultural, consulting and landscape design and installation provider. When you think tree and landscape services, think Arborists NW.

ONLINE: <https://arboristsnw.com/>
PHONE: 206-779-2579
EMAIL: neal@arboristsnw.com

No.	Description	Date

RUDD PLAN

8032 SE 57TH ST, MERCER ISLAND, WA 98040

RUDD PLAN

ARBORIST TREE PLAN

Project number	24008
Date	
Drawn by	CW
Checked by	NB

X100

Scale As indicated